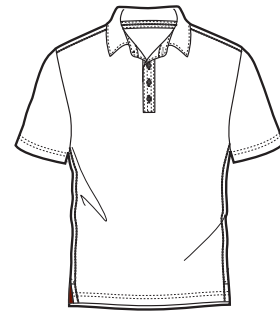


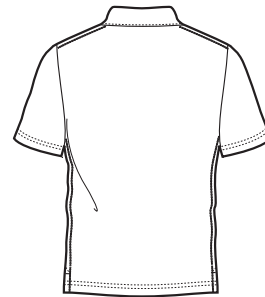


# RED HOUSE

THE WINE COUNTRY LIFESTYLE



Front



Back



**Care Instructions:**

- Wash cold
- Tumble dry low
- Do not bleach
- Cool iron if necessary

## CONTRAST STITCH PERFORMANCE PIQUE POLO

### RH49

Balancing luxury with performance, this polo manages moisture for an impeccable appearance and exceptional comfort. Contrast stitching inside neck, across shoulders and along side seams. Contrast taping inside side vents. Self-fabric collar, three-button placket, open hem sleeves, Red House engraved buttons and right sleeve Red House embroidery. 100% polyester.

Finished Measurements in Inches								
Size	XS	S	M	L	XL	2XL	3XL	4XL
Chest	29 1/2"	30"	30 1/2"	31"	32"	33"	33 1/2"	34"
Body	18 1/2"	20"	21 1/2"	23 1/2"	25 1/2"	27"	29"	31"
Sleeve	17 5/8"	18 1/2"	19 3/8"	20 1/2"	21 5/8"	22 1/2"	23 3/8"	24 1/4"

Chest measured 1" under arm hole. Body length measured from center back neck seam to hem.  
 Sleeve measured from center back neck seam to hem. Shoulder width measured from arm hole to arm hole.  
 Pocket measured WxH. Collar measured by circumference.

Colors	
	Black
	White
	Clay Green
	Bermuda Purple
	Vine Green
	Insignia Blue
	Boreaux Red

**Please Note:**  
 Colors shown are approximate and for reference only. For closest match see PMS colors, or for exact match, returnable samples and grommited samples are available.

Color Chart							
Colors	Black	White	Clay Green	Bermuda Purple	Vine Green	Insignia Blue	Boreaux Red
Textile PMS	19-1102TC	11-0601TC	No Match	No Match	No Match	No Match	No Match
General PMS	Process Black	663C	418C	5185C	575C	7546C	202C
Madiera (Tonal Emb)	1007	1071	No Match	No Match	No Match	No Match	No Match