



Classic soft shell design merges with modern two-tone graphics in our Embark Soft Shell Jacket. This eye-catching way to battle rain and wind features a zip-through cadet collar with chin guard and adjustable cuffs for the perfect fit.

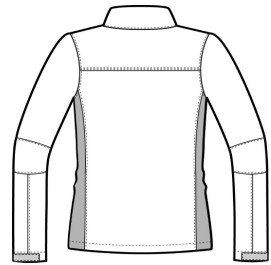
- 93/7 poly/spandex woven bonded to 100% polyester knit lining with laminated film insert to repel water and wind
- 1000MM fabric waterproof rating
- 1000G/M² fabric breathability rating
- Self-fabric adjustable tab cuffs with hook and loop closures
- Front zippered pockets
- Open hem

CARE INSTRUCTIONS

Machine was cold on gentle cycle with like colors. Use mild detergent. Remove immediately. Do not allow to lay on itself when wet. Tumble dry low. Cool iron if needed. Do not dry clean.



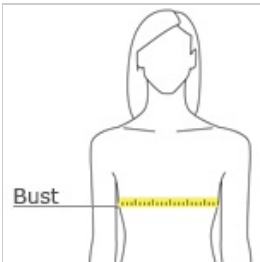
front



back

[Tips For Effectively Screen Printing Polyester Fabrics](#)

HOW TO MEASURE



BUST
With arms down at sides, measure around the upper body, under arms and around the fullest part of the bust.

SIZE CHART

	XS	S	M	L	XL	XXL	3XL	4XL
Size	2	4/6	8/10	12/14	16/18	20/22	24/26	28/30
Bust	32-34	35-36	37-38	39-41	42-44	45-47	48-51	52-55

COLOR INFORMATION



Black/Deep Grey
PMS 412 C



Sea Salt White/Deep Grey
PMS 412 C