



Nike Golf Long Sleeve Dri-FIT Stretch Tech Polo. 466364

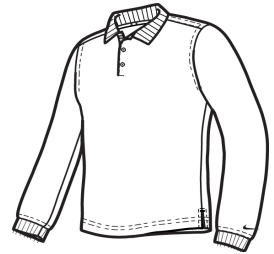


Long sleeves elevate this polo to another level of sophistication while Dri-FIT moisture management technology adds unparalleled performance. Stretch fabric for hassle-free swinging motion. Flat knit collar and cuffs. Heat transfer label for tag-free comfort. Three-button placket. The contrast Swoosh design trademark is embroidered on the lower left sleeve. Side vents. Made of 5-ounce, 100% polyester Dri-FIT fabric.

CARE INSTRUCTIONS

Machine wash cold. wash inside out; wash with like colors. Do not use softeners. Do not use bleach. Tumble dry low. Do not iron. do not dry clean

[Tips For Effectively Screen Printing Polyester Fabrics](#)



front



back

HOW TO MEASURE



CHEST

With arms down at sides, measure around the upper body, under arms and over the fullest part of the chest.

SIZE CHART

	XS	S	M	L	XL	2XL	3XL	4XL
Chest Size (inches)	32-35	35 - 37 1/2	37 1/2 - 41	41 - 44	44 - 48 1/2	48 1/2 - 53 1/2	53 1/2 - 58	58 - 63

COLOR INFORMATION

Anthracite	Black PMS PROCESS BLACK C	Blue Sapphire PMS 661 C	Midnight Navy PMS 2767 C	Varsity Red	White PMS WHITE