



OGIO® Ladies Torque II Jacket. LOG2010

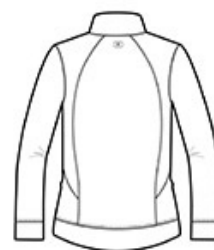


This jacket has an on-trend fit and an ultra cool vibe thanks to its flattering length, curved drop tail hem, princess seams and welding details. It also offers very good water protection.

- 100% poly interlock bonded to 6.5-ounce, 100% poly microfleece
- 3000MM fabric waterproof rating
- 3000G/M² fabric breathability rating
- Contrast color inner fleece
- Zip-through cadet collar
- 0 heat transfer at center back
- Front and back princess seams
- Reverse coil zipper with rubber OGIO zipper pull
- Front zippered pockets with welding details and matte black O zipper pulls
- Open cuffs
- OGIO woven badge on left side seam
- Curved drop tail hem



front

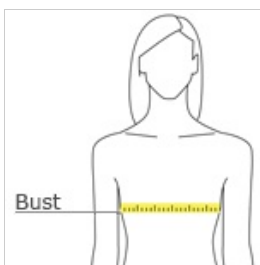


back

CARE INSTRUCTIONS

Machine wash cold. Tumble dry low. Do not dryclean. Do not iron. Do not bleach.

HOW TO MEASURE



BUST

With arms down at sides, measure around the upper body, under arms and around the fullest part of the bust.

SIZE CHART

	XS	S	M	L	XL	2XL	3XL	4XL
Size	2	4/6	8/10	12/14	16/18	20/22	24/26	28/30
Bust	32-34	35-36	37-38	39-41	42-44	45-47	48-51	52-55

COLOR INFORMATION



Blacktop/
Diesel Grey
PMS NTR Black



Diesel Grey/
Nitro Yellow
CPMS 7540 C



Pink Punch/
Diesel Grey
PMS 7635 C