



Eddie Bauer® Ladies Highpoint Fleece Jacket. EB241



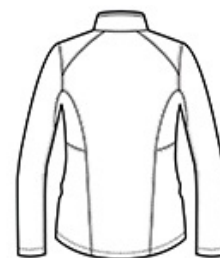
Made for movement, this sophisticated stretch twill fleece jacket has a smooth face and brushed fleece backing. Tonal welding details at the pockets and streamlined tailoring give it a refined look for indoor and outdoor uses. Beautifully shaped, feminine collar. Reverse coil zippers. Front zippered pockets. Contrast Eddie Bauer logo heat transfer on the right hem. Made of 13.8-ounce, 94/6 poly/spandex fleece with an anti-pill finish

CARE INSTRUCTIONS

Machine wash cold. Do not bleach. Tumble dry low. Remove promptly. Cool iron if needed. Do not use softeners

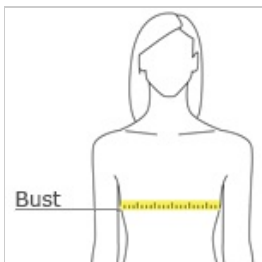


front



back

HOW TO MEASURE



BUST

With arms down at sides, measure around the upper body, under arms and around the fullest part of the bust.

SIZE CHART

	XS	S	M	L	XL	2XL	3XL	4XL
Size	2	4/6	8/10	12/14	16/18	20/22	24/26	28/30
Bust	32-33	34-35	36-37	38-40	41-43	44-46	47-49	50-52

COLOR INFORMATION



Black
PMS NTR BLACK
PMS 7706 C



Denali Blue
PMS 7706 C



Metal Grey
PMS COOL GREY
9 C