

# RED HOUSE®

## Ladies Non-Iron Pinpoint Oxford RH25



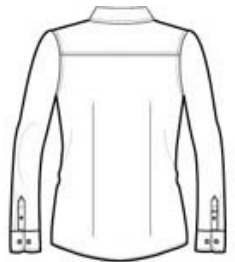
This shirt blends the impeccable appearance of 100% non-iron cotton with the polish of pinpoint oxford. Two-ply 80-doubles yarn for strength, single-needle tailoring, open collar, front and back darts, Red House engraved buttons and embroidery on the right sleeve placket.

### CARE INSTRUCTIONS

Machine wash warm with like colors. Do not bleach. Tumble dry low. Remove promptly and hang.

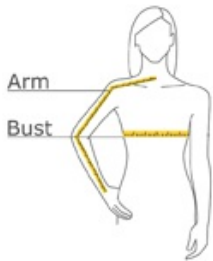


front



back

### HOW TO MEASURE



#### BUST

With arms down at sides, measure around the upper body, under arms and around the fullest part of the bust.

#### ARM

Place hand on hip. Start at the center of the back of the neck and measure across the shoulder, to the elbow, and then down to the wrist.

### SIZE CHART

	XS	S	M	L	XL	XXL	3XL	4XL
Size	2	4/6	8/10	12/14	16/18	20/22	24/26	28/30
Bust	32-34	35-36	37-38	39-41	42-44	45-47	48-51	52-55
Arm	30 - 30 3/4	30 3/4 - 31 1/2	31 1/2 - 32	32 - 32 1/2	32 1/2 - 33	33 - 33 3/8	33 3/8 - 33 3/4	33 3/4 - 34 1/2

### COLOR INFORMATION



Blue  
PMS 536 C



Pink  
PMS 705 C



White  
PMS 6 6 3 C