

RED HOUSE®

Ladies Stripe Non-Iron Button-Down Shirt RH41



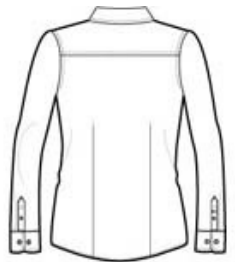
Always immaculate, our 100% two-ply cotton looks polished all day long, without touching an iron. This button-down shirt is woven with 80-doubles yarn and specially treated to stay exceptionally soft. Single-needle tailoring; open collar, front and back darts, Red House engraved buttons and embroidery on the right sleeve placket.

CARE INSTRUCTIONS

Machine wash warm with like colors. Do not bleach. Tumble dry low. Remove promptly and hang.

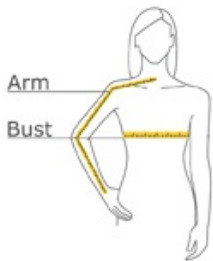


front



back

HOW TO MEASURE



BUST

With arms down at sides, measure around the upper body, under arms and around the fullest part of the bust.

ARM

Place hand on hip. Start at the center of the back of the neck and measure across the shoulder, to the elbow, and then down to the wrist.

SIZE CHART

	XS	S	M	L	XL	XXL	3XL	4XL
Size	2	4/6	8/10	12/14	16/18	20/22	24/26	28/30
Bust	32-34	35-36	37-38	39-41	42-44	45-47	48-51	52-55
Arm	30 - 30 3/4	30 3/4 - 31 1/2	31 1/2 - 32	32 - 32 1/2	32 1/2 - 33	33 - 33 3/8	33 3/8 - 33 3/4	33 3/4 - 34 1/2

COLOR INFORMATION



Blue/White
PMS 659C



Light Grey/White



Light Tan/White



Pink/White
PMS 699C