

RED HOUSE®

Ladies Herringbone Non-Iron Button-Down Shirt RH48



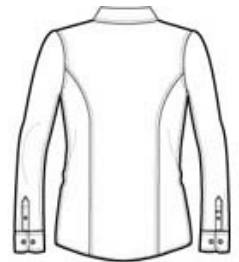
With a subtle herringbone texture, this 100% two-ply cotton shirt retains its polished looks without touching an iron. This distinguished button-down is woven with 80-doubles yarn and specially treated to stay wrinkle resistant and exceptionally soft. Single-needle tailoring, gently contoured silhouette, open collar, princess seams, Red House engraved buttons and embroidery on the right sleeve placket.

CARE INSTRUCTIONS

Machine wash warm, with like colors. Do not bleach. Tumble dry low. Remove promptly.

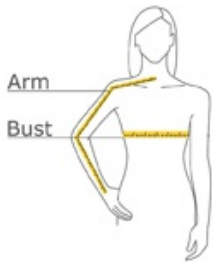


front



back

HOW TO MEASURE



BUST

With arms down at sides, measure around the upper body, under arms and around the fullest part of the bust.

ARM

Place hand on hip. Start at the center of the back of the neck and measure across the shoulder, to the elbow, and then down to the wrist.

SIZE CHART

| | XS | S | M | L | XL | XXL | 3XL | 4XL |
|------|-------------|-----------------|-------------|-------------|-------------|-------------|-----------------|-----------------|
| Size | 2 | 4/6 | 8/10 | 12/14 | 16/18 | 20/22 | 24/26 | 28/30 |
| Bust | 32-34 | 35-36 | 37-38 | 39-41 | 42-44 | 45-47 | 48-51 | 52-55 |
| Arm | 30 - 30 3/4 | 30 3/4 - 31 1/2 | 31 1/2 - 32 | 32 - 32 1/2 | 32 1/2 - 33 | 33 - 33 3/8 | 33 3/8 - 33 3/4 | 33 3/4 - 34 1/2 |

COLOR INFORMATION



Bermuda Purple



Black
PMS ProBlk C



Insignia Blue
PMS 7546 C



White
PMS CGy1 C



Wintergreen